



# GigaVUE-OS Upgrade Guide

**GigaVUE-OS**

Product Version: 6.12

Document Version: 1.0

(See Change Notes for document updates.)

**Copyright 2025 Gigamon Inc. All rights reserved.**

Information in this document is subject to change without notice. The software described in this document is furnished under a license agreement or nondisclosure agreement. No part of this publication may be reproduced, transcribed, translated into any language, stored in a retrieval system, or transmitted in any form or any means without the written permission of Gigamon Inc.

#### **Trademark Attributions**

Gigamon and the Gigamon logo are trademarks of Gigamon in the United States and/or other countries. Gigamon trademarks can be found at [www.gigamon.com/legal-trademarks](http://www.gigamon.com/legal-trademarks). All other trademarks are the trademarks of their respective owners.

Gigamon Inc.  
3300 Olcott Street  
Santa Clara, CA 95054  
408.831.4000

# Change Notes

When a document is updated, the document version number on the cover page will indicate a new version and will provide a link to this Change Notes table, which will describe the updates.

Product Version	Document Version	Date Updated	Change Notes
6.12	1.0	10/27/2025	The original release of this document with 6.12.00 GA.

# Contents

<b>GigaVUE-OS Upgrade Guide</b>	<b>1</b>
Change Notes	3
Contents	4
<b>GigaVUE-OS Upgrade</b>	<b>6</b>
<b>Preparing for Your GigaVUE-OS Upgrade</b>	<b>7</b>
Before You Begin - Required Items	7
Supported Upgrade Path—Standalone Nodes	8
GigaVUE-OS Upgrade Summary	9
Upgrade Summary - Clustered Nodes	11
Licensing for Clustered Nodes in GigaVUE-OS	11
Upgrade Sequence	11
Software Image Filenames for GigaVUE-OS Nodes	12
Coreboot version by GigaVUE-OS Release	13
AMI BIOS version by GigaVUE-OS Release	17
Yantra BIOS version by GigaVUE-OS Release	21
Portwell BIOS version by GigaVUE-OS Release	21
HCT BIOS version by GigaVUE-OS Release	22
Gateway Ports Converted to Tool Ports	23
<b>Upgrading GigaVUE-OS Nodes</b>	<b>24</b>
Important: Back Up Your Configuration	24
Upgrading GigaVUE-OS Nodes Using GigaVUE-OS CLI	26
Before You Begin	26
Install the Software Image	27
Bootloader Installation	28
Install U-Boot (If a Newer Version is Available)	29
Install Coreboot (If a Newer Version is Available)	30
Install PLD (If a Newer Version is Available)	30
Verify Version Numbers	32
Upgrade Software on a GigaVUE-OS Node or a Cluster from GigaVUE-FM	33
Before You Begin	33
Orchestrated Upgrade of Devices from GigaVUE-FM	35
How Orchestrated Upgrade Works	35
Upgrade Images for Standalone Nodes and Clusters	37
View Orchestrated Upgrade Tasks	44
Jobs Control Options	45

Credentials for Admin Account on New GigaVUE-OS Systems .....	46
<b>Downgrading GigaVUE-OS Nodes .....</b>	<b>46</b>
<b>Additional Sources of Information .....</b>	<b>48</b>
Documentation .....	48
How to Download Software and Release Notes from My Gigamon .....	50
Documentation Feedback .....	51
Contact Technical Support .....	52
Contact Sales .....	52
Premium Support .....	52
The VUE Community .....	53
<b>Glossary .....</b>	<b>54</b>

# GigaVUE-OS Upgrade

This guide describes how to upgrade GigaVUE-OS HC Series and GigaVUE-OS TA Series nodes to the GigaVUE-OS 6.12.xx release. Refer to the following sections for details:

- [Preparing for Your GigaVUE-OS Upgrade](#)
- [Upgrading GigaVUE-OS Nodes](#)

# Preparing for Your GigaVUE-OS Upgrade

This chapter describes how to upgrade GigaVUE-OS HC Series and GigaVUE-OS TA Series nodes to the GigaVUE-OS 6.12.xx release. Refer to the following sections for details:

- [Before You Begin - Required Items](#)
- [Supported Upgrade Path—Standalone Nodes](#)
- [Upgrade Summary - Clustered Nodes](#)
- [Bootloader Installation](#)
- [Gateway Ports Converted to Tool Ports](#)

## Before You Begin - Required Items

Use this upgrade guide to upgrade to software version 6.12.xx. This guide is for nodes running the previous General Availability (GA) releases or the previous Long Term Support (LTS) release, which is 6.1.04.

### Obtaining Software Images

To obtain software images, register on the Gigamon Community portal and download the software. You will need to provide the serial number of any one of the nodes to register and download the software. Use the **show chassis** command to retrieve a node's serial number.

To reach the Gigamon Community portal, use the following link:

<https://community.gigamon.com/gigamoncp/>

For assistance, contact Technical Support at the following email address:

[support@gigamon.com](mailto:support@gigamon.com)

### Separate Software Images for Different Nodes

The software image upgrade procedure is slightly different depending on the node you are upgrading. Relevant files and documentation are available on the [Gigamon Customer Portal](#). Note the filenames in [Table 2: Required Items for System Upgrade](#).

Table 1: Software Image Filenames Unique to the Node

Control Card or Node	Required Items	Description
GigaVUE-HC1-Plus	hc1p_612xx.img	Binary image file containing the updated software for the GigaVUE-HC1-Plus. The <b>xx</b> indicates the exact build number.
GigaVUE-HC1	hc1_612xx.img	Binary image file containing the updated software for the GigaVUE-HC1. The <b>xx</b> indicates the exact build number.
GigaVUE-HC3	hc3_612xx.img	Binary image file containing the updated software for the GigaVUE-HC3. The <b>xx</b> indicates the exact build number.
GigaVUE-TA25	ta25_612xx.img	Binary image file containing the updated software for the GigaVUE-TA25. The <b>xx</b> indicates the exact build number.
GigaVUE-OS-TA100	ta100_612xx.img	Binary image file containing the updated software for the GigaVUE-OS-TA100. The <b>xx</b> indicates the exact build number.
GigaVUE-OS-TA200	ta200_612xx.img	Binary image file containing the updated software for the GigaVUE-OS-TA200. The <b>xx</b> indicates the exact build number.
GigaVUE-TA400	ta400_612xx.img	Binary image file containing the updated software for the GigaVUE-TA400. The <b>xx</b> indicates the exact build number.
G-TAP A Series 2	gtapa_612xx.img	Binary image file containing the updated software for the G-TAP A Series 2. The <b>xx</b> indicates the exact build number.

## Required Items for Upgrades

The following table summarizes the items you will need to perform the upgrade to GigaVUE-OS 6.12.xx:

Table 2: Required Items for System Upgrade

Node Type/Version	Protocols	Description
All	FTP, TFTP, SFTP, SCP, HTTP, HTTPS	<p>You will need to fetch the GigaVUE-OS nodes' software packages from a file server using one of the supported protocols.</p> <p>The GigaVUE-OS nodes will need the file server's IP address so that it can connect to the server and download the image.</p> <p><b>Note:</b> There are freeware file servers available on the Internet for a variety of operating systems. A Web search will provide links to many implementations.</p> <p>You can also upload a new software build directly from your PC using GigaVUE-FM.</p>

## Supported Upgrade Path—Standalone Nodes

Use the [Supported Upgrade Path—Standalone Nodes](#) table to determine the path to upgrade your GigaVUE-OS HC Series and GigaVUE-OS TA Series nodes to GigaVUE-OS6.12.xx.



### UPGRADE NOTES:





- All upgrades start and end by saving the node's configuration with the **write memory** command.
- Refer to [Upgrade Summary - Clustered Nodes](#) for considerations when upgrading nodes in a cluster.
- It is recommended that you enable the syslogs with the minimum severity level set to 'info' to help with troubleshooting upgrade issues, if any. After successful upgrade, you can revert to the desired severity level for the syslogs. For more information on syslog command for troubleshooting, refer to [Specify Which Events Are Logged](#). To collect and upload the logs, refer to [Collect sysdump Log Files for Troubleshooting](#), and [Upload sysdump Log Files for Troubleshooting](#)
- Upgrading to a fresh image install will reboot the device twice. This behavior is noted in GigaVUE-HC1, GigaVUE-HC3, GigaVUE-TA100 and GigaVUE-TA200.
- Before upgrading to 6.12.xx, verify the recommended upgrade path below. For the latest Long Term Support (LTS) release information, refer to the [Summary of GA and GA-LTS](#) article on the Gigamon Community.

**IMPORTANT— BEFORE ANY UPGRADE, SAVE YOUR CURRENT CONFIGURATION.** Refer to [Device Configuration Backup](#) in the GigaVUE Administration Guide for guidance.

## GigaVUE-OS Upgrade Summary

To upgrade GigaVUE TA Series, GigaVUE-HC1, and GigaVUE-HC3 nodes to a 6.12.xx release:

1. Use the **show images** command to display the existing image file names. For the maximum number of images allowed, refer to [Check Number of Images](#)
2. Delete the available image files using the **image delete <filename.img>** command, to create space for the new images.
3. Fetch and install the 6.12.xx software image (based on the node information) and bootloader, set next boot, and reload.

## Rules and Notes

The following rules and notes must be considered while upgrading:

- **6.2.00.04:** Software version 6.2.xx is replaced with 6.2.00.04.
- **6.1.04:** Software version 6.1.01 is replaced with 6.1.04.
- GigaVUE-OS-HCT is supported from 6.5.00.
- Before you upgrade to version 6.11 on a FIPS-enabled device, complete the following steps to ensure a successful upgrade:
  - Delete all Inline SSL (iSSL) configurations and the keystore before the upgrade. After the upgrade, reconfigure the Gen 3 GigaSMART module.
  - Remove all HSM and HSM Groups, including nCipher and Luna, from the device.
  - Delete all Inline SSL (iSSL) configurations for Gen 2 GigaSMART modules, since they do not support FIPS 140-3. If you require Inline SSL on GigaVUE-HC1 or GigaVUE-HC3 devices, add a Gen 3 GigaSMART card.

- Remove SNMPv3 configurations that use the MD5 authentication protocol because FIPS 140-3 does not support MD5 algorithms.
- If you don't complete all required steps before upgrading, the upgrade will fail. The system will automatically revert to the previous version.
- If you are installing the SMT-HC1-S module in a GigaVUE-HC1 Chassis, use the recommended upgrade path specific to this module. Refer to *SMT-HC1-S (Gen 3 GigaSMART Card)* in GigaVUE-HC1 Hardware Installation Guide, for details.
- **If upgrading from GigaVUE-OS versions lower than 6.0:** Refer to the "Supported Upgrade Path—Standalone Nodes" section in the GigaVUE-OS Upgrade Guide that is specific to the release.
- **If upgrading from GigaVUE-OS versions lower than 5.5.xx:** While upgrading from any GigaVUE-OS version lower than v5.5.xx, an association of more than one vport to the same GigaSMART group needs to be removed for any existing GTP GigaSMART operation.
- **If upgrading from GigaVUE-FM versions lower than 5.10.01:** The size of the GigaVUE-OS image for GigaVUE-HC1 increased in 5.10.01. Upgrading directly from a pre-5.9 release to 5.10.01 or above is not supported. The following upgrade path is recommended: 5.9.00.04 or 5.9.01 → 5.10.01.
- You cannot upgrade GigaVUE-HC2 nodes beyond v6.5.xx.

Table 3: GigaVUE-OS Upgrade Summary table

To upgrade to 6.12.xx from...	Use the recommended upgrade path for the device...
	GigaVUE HC Series, GigaVUE TA Series, and G-TAP A Series 2
v6.10.xx	6.10.xx ► 6.12.xx
v6.9.xx	6.9.xx ► 6.12.xx
v6.8.xx	6.8.xx ► 6.9.xx ► 6.12.xx
v6.7.xx	6.7.xx ► 6.9.xx ► 6.12.xx
v6.6.xx	6.6.xx ► 6.9.xx ► 6.12.xx
v6.5.xx	6.5.xx ► 6.9.xx ► 6.12.xx
v6.4.xx	6.4.xx ► 6.5.xx ► 6.9.xx ► 6.12.xx
v6.3.xx	6.3.xx ► 6.5.xx ► 6.9.xx ► 6.12.xx
v6.2.00.04	6.2.00.04 ► 6.5.xx ► 6.9.xx ► 6.12.xx
v6.1.xx	6.1.xx ► 6.5.xx ► 6.9.xx ► 6.12.xx

## Upgrade Summary - Clustered Nodes

This section summarizes the upgrade procedure for nodes operating in a cluster.

The upgrade procedure for an individual node in a cluster is nearly identical to that for a standalone node. The only difference is that instead of reloading individual nodes as you upgrade them, you perform a single **cluster reload** after the leader has completed the image upgrade. For instructions about how to upgrade individual nodes, refer to [Upgrading GigaVUE-OS Nodes Using GigaVUE-OS CLI](#).

Note that a GigaVUE-OS TA Series can never be a leader in a cluster configuration. However since the GigaVUE-OS versions are shared amongst the GigaVUE-OS nodes, it is important to upgrade all nodes per instructions prior to using the **cluster reload** command.

### Licensing for Clustered Nodes in GigaVUE-OS

The license required for the clustering feature is Advanced Features License (AD\_Features) in the GigaVUE TA Series devices.

- When upgrading to GigaVUE-OS v6.12.xx, if the node already has a Clustering License, it will automatically be updated to Advanced Features License (AD\_Features) upon upgrade.
- If a license has not been generated yet, or if an earlier version of the license has been generated but not yet installed, then you need to generate (or regenerate) a license from the Gigamon Community portal after upgrading to 6.12.xx. Install and activate the new license.

**NOTE:** The license requirement for clustering changed in GigaVUE-OS 5.4.00. If you are upgrading to 5.4.00 from a previous release, the name changed from “Clustering License” to “Advanced Features License”. However, the instructions remain the same.

### Upgrade Sequence

Gigamon recommends the following upgrade sequence for clusters:

1. Use the **write memory** command on each node in the cluster to preserve settings that are stored locally rather than globally (for example, AAA and hostname settings).
2. Use the **image delete <filename.img>** command to delete all the available image files.

**NOTE:** Use the **show images** command to verify if there are any images existing on the node.

3. On the individual nodes including the leader, fetch and install 6.12.xx software image and bootloader, and set the next boot.

**NOTE:** Do not reload the nodes as you upgrade them.

4. Use the **cluster reload** command from the leader to reestablish the cluster settings.

**NOTE:** The time it takes for the cluster to complete the cluster reload and re-establish packet distribution will vary depending on the number of nodes in the cluster and the complexity of the packet distribution to restore. An average cluster reload will interrupt traffic for five minutes. However, an eight-node cluster with complex packet distribution in place can take as long as 20 minutes to reload completely.

**NOTE:** After reloading the cluster, use the **show cluster global brief** command to determine the roles assigned to each node in the cluster.

- After completing the upgrade, run the **show version** command on each node in the cluster to make sure they are all running a 6.12.xx build. If any node does not show the correct version number, upgrade it individually.

Figure 1 Cluster Upgrade Summary summarizes the cluster upgrade sequence.

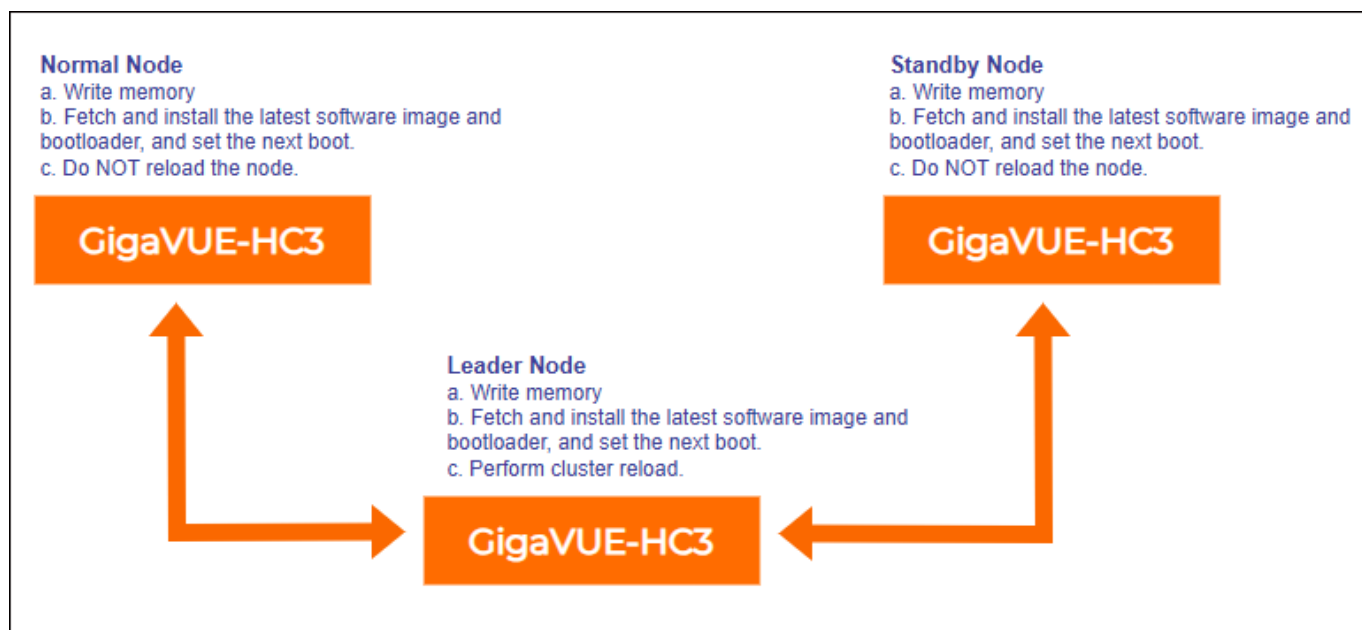


Figure 1 Cluster Upgrade Summary

### Adding a New Node to an Existing Cluster

Before adding a new node to a cluster, make sure that the node is upgraded to the same version as other nodes in the cluster.

**NOTE:** For a GigaVUE-OS TA Series nodes, ensure that the applicable licenses are activated.

## Software Image Filenames for GigaVUE-OS Nodes

Refer to the following sections for more detailed information on Software Image Filename and GigaVUE-OS node type associated with each GigaVUE-OS version:

- [Coreboot version by GigaVUE-OS Release](#)
- [AMI BIOS version by GigaVUE-OS Release](#)
- [Yantra BIOS version by GigaVUE-OS Release](#)
- [Portwell BIOS version by GigaVUE-OS Release](#)
- [HCT BIOS version by GigaVUE-OS Release](#)

## Coreboot version by GigaVUE-OS Release

\* GigaVUE-HC1, GigaVUE-HC3, GigaVUE-OS-TA100, and GigaVUE-OS-TA100-CXP do not have U-boot. They are preloaded with coreboot. The following table summarizes the coreboot versions for GigaVUE-HC1, GigaVUE-HC3, GigaVUE-OS-TA100, and GigaVUE-OS-TA100-CXP:

SW Version	Node Type	Software Image Filename	Coreboot Version
6.10.00	GigaVUE-HC3	hc3_61000.img	1.0.4
	GigaVUE-HC1	hc1_61000.img	1.0.1
	GigaVUE-TA100	ta100_61000.img	0.2.5/1.0.0
6.9.00	GigaVUE-HC3	hc3_6900.img	1.0.4
	GigaVUE-HC1	hc1_6900.img	1.0.1
	GigaVUE-TA100	ta100_6900.img	0.2.5/1.0.0
6.8.00	GigaVUE-HC3	hc3_6800.img	1.0.4
	GigaVUE-HC1	hc1_6800.img	1.0.1
	GigaVUE-TA100	ta100_6800.img	0.2.5/1.0.0
6.7.00	GigaVUE-HC3	hc3_6700.img	1.0.4
	GigaVUE-HC1	hc1_6700.img	1.0.1
	GigaVUE-TA100	ta100_6700.img	0.2.5/1.0.0

SW Version	Node Type	Software Image Filename	Coreboot Version
6.6.00	GigaVUE-HC3	hc3_6600.img	1.0.4
	GigaVUE-HC1	hc1_6600.img	1.0.1
	GigaVUE-TA100	ta100_6600.img	0.2.5/1.0.0
6.5.00	GigaVUE-HC3	hc3_6500.img	1.0.4
	GigaVUE-HC1	hc1_6500.img	1.0.1
	GigaVUE-TA100	ta100_6500.img	0.2.5/1.0.0
6.4.00	GigaVUE-HC3	hc3_6400.img	1.0.4
	GigaVUE-HC1	hc1_6400.img	1.0.1
	GigaVUE-TA100	ta100_6400.img	0.2.5/1.0.0
6.3.00	GigaVUE-HC3	hc3_6300.img	1.0.4
	GigaVUE-HC1	hc1_6300.img	1.0.1
	GigaVUE-TA100	ta100_6300.img	0.2.5/1.0.0
6.2.00.04	GigaVUE-HC3	hc3_620004.img	1.0.4
	GigaVUE-HC1	hc1_620004.img	1.0.1
	GigaVUE-TA100	ta100_620004.img	0.2.5/1.0.0
6.1.04	GigaVUE-HC3	hc3_6104.img	1.0.4
	GigaVUE-HC1	hc1_6104.img	1.0.1
	GigaVUE-TA100	ta100_6104.img	0.2.5/1.0.0
6.0.00	GigaVUE-HC3	hc3_6000.img	1.0.4
	GigaVUE-HC1	hc1_6000.img	1.0.1
	GigaVUE-TA100	ta100_6000.img	0.2.5/1.0.0
5.16.00	GigaVUE-HC3	hc3_51600.img	1.0.4
	GigaVUE-HC1	hc1_51600.img	1.0.1
	GigaVUE-TA100	ta100_51600.img	0.2.5/1.0.0

SW Version	Node Type	Software Image Filename	Coreboot Version
5.15.00	GigaVUE-HC3	hc3_51500.img	1.0.4
	GigaVUE-HC1	hc1_51500.img	1.0.1
	GigaVUE-TA100	ta100_51500.img	0.2.5/1.0.0
5.14.00	GigaVUE-HC3	hc3_51400.img	1.0.4
	GigaVUE-HC1	hc1_51400.img	1.0.1
	GigaVUE-TA100	ta100_51400.img	0.2.5/1.0.0
5.13.00	GigaVUE-HC3	hc3_51300.img	1.0.4
	GigaVUE-HC1	hc1_51300.img	1.0.1
	GigaVUE-TA100	ta100_51300.img	0.2.5/1.0.0
5.12.00	GigaVUE-HC3	hc3_51200.img	1.0.4
	GigaVUE-HC1	hc1_51200.img	1.0.1
	GigaVUE-TA100	ta100_51200.img	0.2.5/1.0.0
	GigaVUE-TA100-CXP	tacx100_51200.img	1.0.0
5.11.00	GigaVUE-HC3	hc3_51100.img	1.0.4
	GigaVUE-HC1	hc1_51100.img	1.0.1
	GigaVUE-TA100	ta100_51100.img	0.2.5/1.0.0
	GigaVUE-TA100-CXP	tacx100_51100.img	1.0.0
5.10.01	GigaVUE-HC3	hc3_51001.img	1.0.4
	GigaVUE-HC1	hc1_51001.img	1.0.1
	GigaVUE-TA100	ta100_51001.img	0.2.5/1.0.0
	GigaVUE-TA100-CXP	tacx100_51001.img	1.0.0
5.10.00	GigaVUE-HC3	hc3_51000.img	1.0.4
	GigaVUE-HC1	hc1_51000.img	1.0.1
	GigaVUE-TA100	ta100_51000.img	0.2.5/1.0.0
	GigaVUE-TA100-CXP	tacx100_51000.img	1.0.0

SW Version	Node Type	Software Image Filename	Coreboot Version
5.9.00	GigaVUE-HC3	hc3_5900.img	1.0.4
	GigaVUE-HC1	hc1_5900.img	1.0.1
	GigaVUE-TA100	ta100_5900.img	0.2.5/1.0.0
	GigaVUE-TA100-CXP	tacx100_5900.img	1.0.0
5.8.00	GigaVUE-HC3	hc3_5800.img	1.0.4
	GigaVUE-HC1	hc1_5800.img	1.0.1
	GigaVUE-TA100	ta100_5800.img	0.2.5/1.0.0
	GigaVUE-TA100-CXP	tacx100_5800.img	1.0.0
5.7.00	GigaVUE-HC3	hc3_5700.img	1.0.4
	GigaVUE-HC1	hc1_5700.img	1.0.1
	GigaVUE-TA100	ta100_5700.img	0.2.5/1.0.0
	GigaVUE-TA100-CXP	tacx100_5700.img	1.0.0
5.6.00	GigaVUE-HC3	hc3_5600.img	1.0.4
	GigaVUE-HC1	hc1_5600.img	1.0.1
	GigaVUE-TA100	ta100_5600.img	0.2.5/1.0.0
	GigaVUE-TA100-CXP	tacx100_5600.img	1.0.0
5.5.00	GigaVUE-HC3	hc3_5500.img	1.0.4
	GigaVUE-HC1	hc1_5500.img	1.0.1
	GigaVUE-TA100	ta100_5500.img	0.2.5/1.0.0
	GigaVUE-TA100-CXP	tacx100_5500.img	1.0.0
5.4.00	GigaVUE-HC3	hc3_5400.img	1.0.3
	GigaVUE-HC1	hc1_5400.img	1.0.1
	GigaVUE-TA100	ta100_5400.img	0.2.5/1.0.0
	GigaVUE-TA100-CXP	tacx100_5400.img	1.0.0



SW Version	Node Type	Software Image Filename	Coreboot Version
5.3.00	GigaVUE-HC3	hc3_5300.img	1.0.3
	GigaVUE-HC1	hc1_5300.img	1.0.1
	GigaVUE-TA100	ta100_5300.img	0.2.5
	GigaVUE-TA100-CXP	tacx100_5300.img	1.0.0
5.2.00	GigaVUE-HC3	hc3_5200.img	1.0.3
	GigaVUE-HC1	hc1_5200.img	1.0.1
	GigaVUE-TA100	ta100_5200.img	0.2.5
	GigaVUE-TA100-CXP	tacx100_5200.img	1.0.0
5.1.00	GigaVUE-HC3	hc3_5100.img	1.0.3
	GigaVUE-HC1	hc1_5100.img	1.0.1
	GigaVUE-TA100	ta100_5100.img	0.2.5
	GigaVUE-TA100-CXP	tacx100_5100.img	1.0.0

## AMI BIOS version by GigaVUE-OS Release

\*\* GigaVUE-TA200, GigaVUE-TA200E, GigaVUE-TA400, GigaVUE-TA25, and GigaVUE-TA25E do not have U-boot. They are preloaded with AMI BIOS.

GigaVUE-TA200, GigaVUE-TA200E, GigaVUE-TA400, GigaVUE-TA25, and GigaVUE-TA25E devices are loaded with both primary BIOS version and secondary BIOS version. The secondary BIOS version is booted up when the primary BIOS version fails. However, secondary BIOS version is the BIOS version that is available when the chassis is manufactured. Primary BIOS version can be upgraded to the latest version available. However, the secondary BIOS version cannot be upgraded.

The following table summarizes the AMI BIOS versions for GigaVUE-TA200, GigaVUE-TA200E, GigaVUE-TA400, GigaVUE-TA25, and GigaVUE-TA25E:

Table 4: AMI BIOS Version for GigaVUE-TA200, GigaVUE-TA200E, GigaVUE-TA400, GigaVUE-TA25, and GigaVUE-TA25E

SW Version	Node Type	Software Image Filename	AMI BIOS Version
6.10.00	GigaVUE-TA200	ta200_61000.img	1.2.0
	GigaVUE-TA25	ta25_61000.img	2.0.2
	GigaVUE-TA400	ta400_61000.img	1.1.0
	GigaVUE-TA200E	ta200e_61000.img	v40.01.01.01
	GigaVUE-TA25E	ta25e_61000.img	v40.01.01.00
6.9.00	GigaVUE-TA200	ta200_6900.img	1.2.0
	GigaVUE-TA25	ta25_6900.img	2.0.2
	GigaVUE-TA400	ta400_6900.img	1.1.0
	GigaVUE-TA200E	ta200e_6900.img	v40.01.01.01
	GigaVUE-TA25E	ta25e_6900.img	v40.01.01.00
6.8.00	GigaVUE-TA200	ta200_6800.img	1.2.0
	GigaVUE-TA25	ta25_6800.img	2.0.2
	GigaVUE-TA400	ta400_6800.img	1.1.0
	GigaVUE-TA200E	ta200e_6800.img	v40.01.01.01
	GigaVUE-TA25E	ta25e_6800.img	v40.01.01.00
6.7.00	GigaVUE-TA200	ta200_6700.img	1.2.0
	GigaVUE-TA25	ta25_6700.img	2.0.2
	GigaVUE-TA400	ta400_6700.img	1.1.0
	GigaVUE-TA200E	ta200e_6700.img	v40.01.01.01
	GigaVUE-TA25E	ta25e_6700.img	v40.01.01.00
6.6.00	GigaVUE-TA200	ta200_6600.img	1.2.0
	GigaVUE-TA25	ta25_6600.img	2.0.2
	GigaVUE-TA400	ta400_6600.img	1.1.0
	GigaVUE-TA200E	ta200e_6600.img	v40.01.01.01
	GigaVUE-TA25E	ta25e_6600.img	v40.01.01.00

SW Version	Node Type	Software Image Filename	AMI BIOS Version
6.5.00	GigaVUE-TA200	ta200_6500.img	1.2.0
	GigaVUE-TA25	ta25_6500.img	2.0.2
	GigaVUE-TA400	ta400_6500.img	1.1.0
	GigaVUE-TA200E	ta200e_6500.img	v40.01.01.01
	GigaVUE-TA25E	ta25e_6500.img	v40.01.01.00
6.4.00	GigaVUE-TA200	ta200_6400.img	1.2.0
	GigaVUE-TA25	ta25_6400.img	2.0.2
	GigaVUE-TA400	ta400_6400.img	1.1.0
	GigaVUE-TA200E	ta200e_6400.img	v40.01.01.01
	GigaVUE-TA25E	ta25e_6400.img	v40.01.01.00
6.3.00	GigaVUE-TA200	ta200_6300.img	1.2.0
	GigaVUE-TA25	ta25_6300.img	2.0.2
	GigaVUE-TA400	ta400_6300.img	1.1.0
	GigaVUE-TA200E	ta200e_6300.img	v40.01.01.01
	GigaVUE-TA25E	ta25e_6300.img	v40.01.01.00
6.2.00.04	GigaVUE-TA200	ta200_620004.img	1.2.0
	GigaVUE-TA25	ta25_620004.img	2.0.2
	GigaVUE-TA400	ta400_620004.img	1.1.0
	GigaVUE-TA200E	ta200e_620004.img	v40.01.01.01
	GigaVUE-TA25E	ta25e_620004.img	v40.01.01.00
6.1.04	GigaVUE-TA200	ta200_6104.img	1.2.0
	GigaVUE-TA25	ta25_6104.img	2.0.2
	GigaVUE-TA400	ta400_6104.img	1.1.0
	GigaVUE-TA200E	ta200e_6104.img	v40.01.01.01
	GigaVUE-TA25E	ta25e_6104.img	v40.01.01.00
6.0.98	GigaVUE-TA200E	ta200e_6098.img	v40.01.01.01
	GigaVUE-TA25E	ta25e_6098.img	v40.01.01.00

SW Version	Node Type	Software Image Filename	AMI BIOS Version
6.0.00	GigaVUE-TA200	ta200_6000.img	1.2.0
	GigaVUE-TA25	ta25_6000.img	2.0.2
	GigaVUE-TA400	ta400_6000.img	1.1.0
5.16.00	GigaVUE-TA200	ta200_51600.img	1.2.0
	GigaVUE-TA25	ta25_51600.img	2.0.2
	GigaVUE-TA400	ta400_51600.img	1.1.0
5.15.00	GigaVUE-TA200	ta200_51500.img	1.2.0
	GigaVUE-TA25	ta25_51500.img	2.0.2
	GigaVUE-TA400	ta400_51500.img	1.1.0
5.14.00	GigaVUE-TA200	ta200_51400.img	1.2.0
	GigaVUE-TA25	ta25_51400.img	2.0.2
5.13.00	GigaVUE-TA200	ta200_51300.img	1.2.0
	GigaVUE-TA25	ta25_51300.img	2.0.2
5.12.00	GigaVUE-TA200	ta200_51200.img	1.2.0
	GigaVUE-TA25	ta25_51200.img	2.0.2
5.12.00	GigaVUE-TA200	ta200_51200.img	1.2.0
	GigaVUE-TA25	ta25_51200.img	2.0.2
5.11.00	GigaVUE-TA200	ta200_51100.img	1.1.2a
	GigaVUE-TA25	ta25_51100.img	1.2.0
5.10.04	GigaVUE-TA25	ta25_51004.img	2.0.2
5.10.01	GigaVUE-TA200	ta200_51001.img	1.1.2a
	GigaVUE-TA25	ta25_51001.img	1.2.0
5.10.00	GigaVUE-TA200	ta200_51000.img	1.1.2a
5.9.00	GigaVUE-TA200	ta200_5900.img	1.1.2a
5.8.00	GigaVUE-TA200	ta200_5800.img	1.1.2a
5.7.00	GigaVUE-TA200	ta200_5700.img	1.0.9
5.6.00	GigaVUE-TA200	ta200_5600.img	1.0.9

SW Version	Node Type	Software Image Filename	AMI BIOS Version
5.5.00	GigaVUE-TA200	ta200_5500.img	1.0.9
5.4.00	GigaVUE-TA200	ta200_5400.img	1.0.9
5.3.00	GigaVUE-TA200	ta200_5300.img	1.0.9

## Yantra BIOS version by GigaVUE-OS Release

\*\* GigaVUE-HC1-Plus does not have U-boot. It is preloaded with Yantra BIOS. The following table summarizes the Yantra BIOS versions for GigaVUE-HC1-Plus:

Table 5: Yantra BIOS Version for GigaVUE-HC1-Plus

SW Version	Node Type	Software Image Filename	Yantra BIOS Version
6.10.00	GigaVUE-HC1-Plus	hc1p_61000.img	Yantra.41.011p.0
6.9.00	GigaVUE-HC1-Plus	hc1p_6900.img	Yantra.41.011p.0
6.8.00	GigaVUE-HC1-Plus	hc1p_6800.img	Yantra.41.011p.0
6.7.00	GigaVUE-HC1-Plus	hc1p_6700.img	Yantra.41.011p.0
6.6.00	GigaVUE-HC1-Plus	hc1p_6600.img	Yantra.41.011p.0
6.5.00	GigaVUE-HC1-Plus	hc1p_6500.img	Yantra.41.011p.0
6.4.00	GigaVUE-HC1-Plus	hc1p_6400.img	Yantra.41.011p.0
6.3.00	GigaVUE-HC1-Plus	hc1p_6300.img	Yantra.41.011p.0
6.2.00.04	GigaVUE-HC1-Plus	hc1p_620004.img	Yantra.41.011p.0
6.1.04	GigaVUE-HC1-Plus	hc1p_6104.img	Yantra.41.011p.0
6.0.00	GigaVUE-HC1-Plus	hc1p_6000.img	Yantra.41.011p.0

## Portwell BIOS version by GigaVUE-OS Release

\*\* G-TAP A Series 2 does not have U-boot. It is preloaded with Portwell BIOS. The following table summarizes the Portwell BIOS versions for G-TAP A Series 2:

Table 6: Portwell BIOS Version for G-TAP A Series 2

SW Version	Node Type	Software Image Filename	Portwell BIOS Version
6.10.00	G-TAP A Series 2	gtapa_61000.img	0.0.16
6.9.00	G-TAP A Series 2	gtapa_6900.img	0.0.16
6.8.00	G-TAP A Series 2	gtapa_6800.img	0.0.16
6.7.00	G-TAP A Series 2	gtapa_6700.img	0.0.16
6.6.00	G-TAP A Series 2	gtapa_6600.img	0.0.16
6.5.00	G-TAP A Series 2	gtapa_6500.img	0.0.16
6.4.00	G-TAP A Series 2	gtapa_6400.img	0.0.16
6.3.00	G-TAP A Series 2	gtapa_6300.img	0.0.16
6.2.00.04	G-TAP A Series 2	gtapa_620004.img	0.0.16
6.1.04	G-TAP A Series 2	gtapa_6104.img	0.0.16
6.0.00	G-TAP A Series 2	gtapa_6000.img	0.0.16
5.16.00	G-TAP A Series 2	gtapa_51600.img	0.0.16
5.15.00	G-TAP A Series 2	gtapa_51500.img	0.0.16
5.14.00	G-TAP A Series 2	gtapa_51400.img	0.0.16
5.13.00	G-TAP A Series 2	gtapa_51300.img	0.0.16
5.12.00	G-TAP A Series 2	gtapa_51200.img	0.0.16
5.11.00	G-TAP A Series 2	gtapa_51100.img	0.0.16
5.10.00	G-TAP A Series 2	gtapa_51000.img	0.0.16
5.9.00	G-TAP A Series 2	gtapa_5900.img	0.0.16

## HCT BIOS version by GigaVUE-OS Release

GigaVUE-HCT does not have U-boot. It is preloaded with HCT BIOS. The following table summarizes the HCT BIOS versions for GigaVUE-HCT:

Table 7: HCT BIOS Version for GigaVUE-HCT

SW Version	Node Type	Software Image Filename	Portwell BIOS Version
6.10.00	GigaVUE-HCT	hct_61000.img	HCT.46.003p.0
6.9.00	GigaVUE-HCT	hct_6900.img	HCT.46.003p.0
6.8.00	GigaVUE-HCT	hct_6800.img	HCT.46.003p.0
6.7.00	GigaVUE-HCT	hct_6700.img	HCT.46.003p.0
6.6.00	GigaVUE-HCT	hct_6600.img	HCT.46.003p.0
6.5.00	GigaVUE-HCT	hct_6500.img	HCT.46.003p.0

## Gateway Ports Converted to Tool Ports

During an upgrade (from earlier software versions) , gateway ports and gateway mirrors are automatically converted to tool ports and tool mirrors.

Refer to the following notes and considerations for GigaVUE-OS TA Series nodes (i GigaVUE-OS-TA100):

- Gateway ports on GigaVUE-OS TA Series nodes are removed and converted to tool ports. In addition, gateway mirrors are removed and converted to tool mirrors.
- Tool ports on GigaVUE-OS TA Series nodes can continue to be used to aggregate traffic.
- Tool ports on GigaVUE-OS TA Series nodes can also be used to directly connect to tools, such as firewalls, Intrusion Prevention Systems, or Application Performance Monitors.
- GigaVUE-OS TA Series nodes support network, tool, stack, and hybrid port types.
- Hybrid ports are fully supported in both standalone and cluster mode on GigaVUE-OS TA Series nodes. When a GigaVUE-OS TA Series node is in a cluster, hybrid ports can be configured.
- GigaVUE-OS TA Series nodes can continue to be clustered with GigaVUE-OS HC Series nodes. Tool ports are supported on GigaVUE-OS TA Series nodes in a cluster.
- When GigaVUE-OS TA Series nodes are in a cluster, bidirectional traffic flow is enabled on the stack links of GigaVUE-OS TA Series nodes.

# Upgrading GigaVUE-OS Nodes

Use the procedures in this chapter to upgrade GigaVUE-OS HC Series and GigaVUE-OS TA Series nodes to GigaVUE-OS 6.12.xx.

To begin, prepare the GigaVUE-OS nodes for upgrade by following the procedure in [Important: Back Up Your Configuration](#).

**NOTE:** If your nodes and GigaVUE-FM instance are running software version 5.6.xx or earlier, ensure that you add all the nodes to GigaVUE-FM, upgrade the GigaVUE-FM to 6.12.xx, and then upgrade the nodes to 6.12.xx. This is to ensure that the flexible inline maps added to the nodes before the upgrade are visible in the canvas in GigaVUE-FM. For the recommended upgrade path, refer to [Supported Upgrade Path—Standalone Nodes](#).

## Important: Back Up Your Configuration

1. Copy the 6.12.xx installation file to your file server.
2. Use the **write memory** command on each node in the cluster to preserve settings that are stored locally rather than globally (for example, AAA and hostname settings).

Back up the running configuration using either of the following methods:

Back Up by Copying and Pasting	<pre>(config) # show running-config</pre> <p>This command displays the commands necessary to recreate the node's running configuration on the terminal display. You can copy and paste the output from this command into a text file and save it on your client system. The file can later be pasted back into the CLI to restore the configuration.</p>
Back up to FTP/TFTP/SCP/SFTP Server	<pre>(config) # configuration text generate active running upload &lt;upload URL&gt; &lt;filename&gt;</pre> <p>This command uses FTP, TFTP, SCP, or SFTP to upload the running configuration to a text file on remote storage. The format for the <b>&lt;upload URL&gt;</b> is as follows:</p> <pre>[protocol]://username [:password]@hostname/path/filename</pre> <p>For example, the following command uploads a text configuration file based on the active running configuration and uploads it to an FTP server at 192.168.1.49 with the name <b>config.txt</b>:</p> <pre>(config) # configuration text generate active running uploadftp://myuser:mypass@192.168.1.49/ftp/confi g.txt</pre>



3. Next, follow the procedure: [Upgrading GigaVUE-OS Nodes Using GigaVUE-OS CLI](#) to upgrade GigaVUE-OS HC Series nodes.

# Upgrading GigaVUE-OS Nodes Using GigaVUE-OS CLI

Refer to the following sections to upgrade GigaVUE-OS HC Series and GigaVUE-OS TA Series nodes:

- [Before You Begin](#)
- [Install the Software Image](#)
- [Install U-Boot \(If a Newer Version is Available\)](#)
- [Install Coreboot \(If a Newer Version is Available\)](#)
- [Verify Version Numbers](#)

## Before You Begin

Before you start installing the software image, perform the following checks:

- [Change Default admin Password](#)
- [Check Number of Images](#)
- [Check U-Boot Version](#)
- [Check Coreboot Version](#)

### Change Default admin Password

Check the password on the **admin** account. If you are using the default password on this account (admin123A!), the best practice is to change it to a non-default password before you upgrade. Refer to the [Password Policies](#) section in the *GigaVUE-OS CLI Reference Guide* for more details.

When the upgrade is complete and the node has rebooted, log in with your non-default password.

If you have not changed the default password before the upgrade, when the upgrade is complete and the node has rebooted, you will be prompted to enter a non-default password. The **jump-start** script will automatically launch and prompt the system administrator to change the password on the **admin** account.

### Check Number of Images

Check the number of images currently available for installation on the node with the following command:

```
(config) # show images
```

**The maximum number of images allowed on GigaVUE HC Series or GigaVUE TA Series nodes at any one time is three.**

If there is already the maximum number of images listed in the **Images available to be installed** section of the **show images** output, use the **image delete** command to remove at least one of the existing images before you fetch a new one.

The recommendation is to delete any unused images.

**NOTE:** Once an image is installed, you can delete the uploaded image.

## Check U-Boot Version

If you are upgrading from an older software version, check the U-Boot version using the following command:

```
(config) # show version
```

For example on a GigaVUE-HC1-Plus node, the following output is displayed:

```
U-Boot version: 2011.06.8
```

Check that the U-Boot version matches the version listed in [Software Image Filenames for GigaVUE-OS Nodes](#) in the Bootloader Version column.

If you do not have the same version, you will have to do a U-Boot installation, after the image installation. Refer to [Install U-Boot \(If a Newer Version is Available\)](#).

## Check Coreboot Version

If you are upgrading from an older software version, check the coreboot version using the following command:

```
(config) # show version
```

For example on a GigaVUE-OS-TA100 node, the following output is displayed:

```
1st flash version: coreboot-ta100-0.2.4 Wed Jan 20 15:19:09 CST 2016 **2nd flash version:
coreboot-ta100-0.2.5 Fri Sep 25 19:54:15 CST 2015
```

Check that the coreboot version matches the version listed in [Software Image Filenames for GigaVUE-OS Nodes](#) in the Coreboot Version column.

If you do not have the same version, you will have to do a coreboot installation, after the image installation. Refer to [Install Coreboot \(If a Newer Version is Available\)](#).

## Install the Software Image

1. Log in on the GigaVUE-OS node to be updated as an admin user and switch to Configure mode.
2. Use the **image fetch** command to retrieve the software image from your file server. For example, the following command uses SCP to retrieve the **hc1612xx** image from the **builds** folder on 192.168.1.25:

```
(config) # image fetch scp://user:password@192.168.1.25/builds/hc1612xx.img
```

The CLI shows you the progress of the image fetch with a series of hash marks, returning you to the system prompt when complete.

3. Use the **image install** command to install the downloaded image file. For example, to install the image downloaded in the previous step:

```
(config) # image install hc1612xx.img
```

The GigaVUE-OS CLI presents a series of status messages as it verifies and uncompresses the image, creates file systems, and extracts the image, returning you to the system prompt when complete.

4. The next step is to tell the GigaVUE-OS node which node image to load at the next system boot. The GigaVUE-OS node has two partitions, each of which has a separate image installed. When you install a new image, it automatically installs on the “next” partition – the one you are not using now. The **image boot next** command tells the GigaVUE-OS node to boot from the next partition after the one currently booted – the one where you just installed the new image:

```
(config) # image boot next
```

**NOTE:** In order for sync to work properly following a reload, ensure that the installation file for the active configuration is present after the **image boot next** command in the previous step.

5. Save the current configuration with the following command:

```
(config) # write mem
```

6. Is this node part of a cluster?

- o **No** - Reboot with the following command.

```
(config) # reload
```

When the node comes back up, save the configuration with **write memory**.

- o **Yes** - Is this the last node in the cluster?
- **No** - Do not the reload at this time. Proceed to upgrade the next node in the cluster.
- **Yes** - If this the last node to be upgraded in the cluster (that is, it is the leader), reload the cluster using the following CLI command.

```
(config) # cluster reload
```

7. Save the current configuration with the following command:

```
(config) # write mem
```

## Bootloader Installation

GigaVUE-FM supports the installation of bootloader on GigaVUE HC Series and GigaVUE TA Series nodes during the GigaVUE-OS image upgrade, but it does not automatically activate it.

**NOTE:** Depending on your configuration, you may need to enable physical bypass mode before performing the GigaVUE-OS image upgrade, and then restore it after the upgrade is complete.

During the GigaVUE-OS image upgrade, GigaVUE-FM v5.6.xx (and above) first upgrades the GigaVUE-OS image and then reboots the system. After the GigaVUE HC Series or GigaVUE TA Series node has rebooted with the new GigaVUE-OS image, the bootloader installation will automatically initiate from GigaVUE-FM.

**NOTE:** The bootloader upgrade will only apply if there is a bootloader version change in the specific GigaVUE-OS software release.

When the process completes, a message about the bootloader installation will appear in the GigaVUE-FM Task Log Details, such as, “New bootloader version may have been staged based on device bootloader version. Any future reload of device will pick the new version.” This means that the bootloader binary has been installed on the device and is ready to become active upon the next reload.

**Important:** The newer bootloader version only goes into effect after an additional manual reboot. You must explicitly reload the GigaVUE-OS HC series or GigaVUE-OS TA series device to update the bootloader version. This additional reboot will cause the optical-protection switches of relevant the Bypass Modules to change states multiple times (close > open > close > open). (Table 1 provides the list of relevant modules.) **Recommendation:** To avoid this state-change behavior, enable the physical bypass before performing the GigaVUE-OS image upgrade.

Refer to [Configure Inline Bypass Examples](#) section in the *GigaVUE-OS CLI Reference Guide* for instructions on how to enable the physical bypass.

## Install U-Boot (If a Newer Version is Available)

After checking the U-Boot version, if a newer version is available, you will have to do a U-Boot installation.

Install U-Boot after the image installation if it does not match the Bootloader Version column in [Software Image Filenames for GigaVUE-OS Nodes](#). Use this procedure in particular when you are upgrading from an older software version.

After the image installation of 6.12.xx, use the following command (type **uboot** in full):

```
(config) # show uboot
```

If there is a newer U-Boot version available, the output of the **show uboot** command displays it. For example in the following output, the installed U-Boot is 2011.06.8, but 2011.06.9 is available for installation.

```
* Installed U-Boot binary: 2011.06.8 (Dec 06 2016 - 04:35:29) * U-Boot binary from
active/booted image: 2011.06.9 (Feb 09 2017-02:16:26)
```

If there is a newer U-Boot version available, use the following command to install it:

```
(config) # uboot install
```

The binary bootloader code included with the installed image is installed.

**NOTE:** The newer U-Boot version only goes into effect after a reload

**Uboot Update Notification for Gen3 GS card in Standalone Mode:**

When you try to execute any CLI command when uboot update is in progress, you will get the following notification during bootup or card configuration.

```
% GS Card uboot upgrade is happening. Cannot execute CLI command now
```

You cannot execute any CLI command until the uboot update is complete or until a timer of 15 minutes expires.

## Install Coreboot (If a Newer Version is Available)

After checking the coreboot version, if a newer version is available, you will have to do a coreboot installation.

Install coreboot after the image installation if it does not match the Coreboot Version column in [Software Image Filenames for GigaVUE-OS Nodes](#). Use this procedure in particular when you are upgrading from an older software version.

After the image installation of 6.12.xx, use the following command:

```
(config) # show version
```

If there is a newer coreboot version available, the output of the **show version** command displays it.

If there is a newer coreboot version available, use the following command to install it:

```
(config) # coreboot install
```

The binary bootloader code included with the installed image is installed.

**NOTE:** The newer coreboot version only goes into effect after a reload.

## Install PLD (If a Newer Version is Available)

GigaVUE-HC3, GigaVUE-HC1, GigaVUE-HC1-Plus, and GigaVUE-HCT devices include field programmable gate arrays (FPGAs). PLD upgrade packages are included within the GigaVUE-OS image upgrades of these devices (no separate package or file to download).

Before upgrading PLD, check if a newer version of PLD is available. Use the **show pld** command to determine the same.

```
(config) # show pld
```

If the **show pld** output indicates "Need Upgrade: yes", plan and perform the upgrade for one PLD slot at a time. Use the **pld upgrade slot <boxid>/<slot>** command to upgrade.

**NOTE:** During each PLD slot upgrade do not power cycle the chassis, remove the card, shutdown the card.

Refer to the pld section in the GigaVUE-OS CLI Guide for details.

## Rules, Notes, and Limitations for PLD Upgrade

Refer to the following rules and notes for PLD upgrades:

- In clusters: Executing the PLD commands on the cluster leader will only show or upgrade PLDs for card modules directly inserted into the cluster leader. Therefore, log into each device with PLD-capable modules to inspect or upgrade those modules.
- The show pld output will continue to indicate "**Need Upgrade: yes**" for a slot after a successful PLD upgrade until the chassis is power cycled and the new PLD version is being used.
- When upgrading multiple slots in a chassis, carefully note which slots you have already upgraded during the process.
- Although the pld upgrade command identifies a slot to upgrade using <boxid>/<slot>, in a cluster, this command only upgrades card modules directly inserted into the local chassis.
- Each PLD upgrade will take several minutes to complete.
- Upgrading the PLD on a single GigaVUE-HC3 SMT-HC3-C05 module will take approximately 2 to 3 minutes.
- If a PLD upgrade fails on the first attempt, immediately repeat the PLD upgrade on the same PLD slot a second time. No chassis power cycle is required between the two PLD upgrade attempts on the same PLD slot. If the second PLD upgrade attempt fails, then contact Gigamon Technical Support for further troubleshooting and recommendations.
- The card module that failed the PLD upgrade will likely need to be replaced via RMA. Contact Gigamon Technical Support for assistance.
- It is not recommended to power cycle a chassis or remove/re-insert a card module after a failed PLD upgrade - the module may not return to an operational state or operate with issues.
- After PLD upgrade(s) is/are successfully completed, a power cycle operation is required for new firmware to take effect. Refer to the following table for details:

Device	Slots/cards involved in PLD upgrade	Operation required after a successful upgrade
GigaVUE-HC1/ GigaVUE-HC1-Plus/GigaVUE-HCT	Main board (Slot 1) only.	Chassis power cycle. <ul style="list-style-type: none"> <li>• PLD upgrades on various modules and the main board can be executed sequentially in no particular order, followed by a single chassis power cycle.</li> <li>• Reloading the chassis without a power cycle is not sufficient. The chassis must be completely powered down and then powered back on.</li> <li>• All the power supplies must be powered off for chassis with multiple power supplies.</li> <li>• For DC-powered chassis, temporarily remove the DC fuses in the top-of-rack fuse panel.</li> </ul>
	Main board (Slot 1) and one or more modules (Slot 2 and above).	
GigaVUE-HC1-Plus	Rear GigaSMART module (Slot 4) only.	
	Rear GigaSMART module (Slot 4) and one or more front modules (Slots 2-3).	
GigaVUE-HC3	Main board (Slot cc1) only.	
	Main board (Slot cc1) and one or more modules (Slots 1-4).	
Any GigaVUE TA Series appliance	Only the main board (Slot 1) is applicable.	
G-TAP A Series	Only the main board is applicable.	
GigaVUE-HC1/ GigaVUE-HC1-Plus/GigaVUE-HCT/GigaVUE-HC3	One or more modules only. The main board (or Rear GigaSMART module in GigaVUE-HC1-Plus) is not involved.	The upgraded module(s) should be shut down, physically removed, and re-inserted. Alternatively, the chassis power cycle as described above can be done.

## Verify Version Numbers

After completing the upgrade to GigaVUE-OS 6.12.xx, run the **show version** command on all upgraded nodes to make sure they are all running a 6.12.xx build. If any node does not show the correct version number, upgrade it individually.



# Upgrade Software on a GigaVUE-OS Node or a Cluster from GigaVUE-FM

This section describes the steps to upgrade the software on GigaVUE-OS nodes and clusters using GigaVUE-FM. You can upgrade software by using an image that is located on an external image server, or you can use GigaVUE-FM as the image server for HC Series and TA Series nodes.

Refer to the section:

- [Before You Begin](#)

## Before You Begin

Before upgrading a node or a cluster, it is important to note the following:

- GigaVUE-FM can upgrade up to 32 nodes at a time. For example, if you select a cluster with 8 nodes and 28 standalone nodes, GigaVUE-FM will fail to upgrade as the total number of nodes exceeds the limit.
- Check if the device that you want to upgrade has enough disk space. Disk space is computed based on the last synchronized time. A newly added node may sometimes show low disk space. Wait for approximately 5 minutes for the configuration sync to complete or rediscover the device and then check the disk space.
- GigaVUE-HC1-Plus devices have 4GB RAM and can go into a low memory condition. It is always recommended to do a reload before the image install as part of the upgrade process.
- When the upgrade process is complete, a post-upgrade sanity check is performed. Physical inventory snapshot of nodes, cards, ports, maps, and GigaSMART operations are captured and the numbers from before and after the upgrade are compared. Sometimes, these numbers do not match immediately after the upgrade, as the device is still being configured. GigaVUE-FM checks every minute whether the nodes have joined the cluster. If the nodes joined do not increment in 30 minutes, then the sanity check will fail.

After the nodes join the cluster, GigaVUE-FM again checks every minute for other configuration objects to come up. If the configuration objects do not increment in 10 minutes, the sanity check will fail. When the sanity check fails, GigaVUE-FM provides an ability to view the configuration object that failed the sanity check.

- GigaVUE-FM v5.5.00 supports the installation of bootloader on GigaVUE HC Series and GigaVUE TA Series nodes during the GigaVUE-OS image upgrade, but it does not automatically activate it.

**NOTE:** Depending on your configuration, you may need to enable physical bypass mode before performing the GigaVUE-OS image upgrade, and then restore it after the upgrade is complete.

During the GigaVUE-OS image upgrade, GigaVUE-FM v5.5.00 first upgrades the GigaVUE-OS image and then reboots the system. After the GigaVUE HC Series or GigaVUE TA Series node has rebooted with the new GigaVUE-OS image, the bootloader installation will automatically initiate from GigaVUE-FM.

**NOTE:** The bootloader upgrade will apply only if there is a bootloader version change in the specific GigaVUE-OS software release.

When the installation process completes, a message about the bootloader installation will appear in the GigaVUE-FM Task Log Details.

**IMPORTANT:** The newer bootloader version only goes into effect after an additional manual reboot. You must explicitly reload the GigaVUE-OS HC series or GigaVUE-OS TA series device to update the bootloader version. This additional reboot will cause the optical-protection switches of the relevant Bypass Modules to change states multiple times.

**RECOMMENDATION:** To avoid this state-change behavior, enable the physical bypass before performing the GigaVUE-OS image upgrade. Refer to “Configuring Inline Bypass Examples: Protected Inline Bypass Using Bypass Combo Modules” in the *GigaVUE-OS CLI Reference Guide* for instructions on how to enable the physical bypass.

**NOTE:** The default password admin123A! for the admin user is no longer valid when logging in to the node. When upgrading from the CLI, the configuration jump-start script requires the user to change the default password for the admin user. However, if the node is upgraded using GigaVUE-FM, the admin password on the node is not changed.

## Orchestrated Upgrade of Devices from GigaVUE-FM

Upgrading devices from GigaVUE-FM GUI is an internal task and has few limitations<sup>1</sup> which makes it difficult for the users performing the upgrade. Starting from software version 6.3.00, you can perform orchestrated upgrade of the devices using the GigaVUE-FM GUI, in which the upgrade is performed in stages. The orchestrated upgrade process provides the following advantages:

- Ability to upgrade a maximum of six hundred (600) devices at a time.
- Monitor the device upgrade status using the dashboard page.
- Re-run possible stages or execute specific stages later based on the maintenance windows.

**NOTE:** For the orchestrated upgrade functionality to work, GigaVUE-FM must be running software version 6.3.00. Devices must be running software version 5.4.00 and above.

### How Orchestrated Upgrade Works

In the orchestrated upgrade process, the tasks that happen internally during the upgrade are available as options in the Node Upgrade page. This provides control for the users on the entire upgrade process.

The orchestrated upgrade consists of the following stages:


<b>Fetch</b>	Device image is fetched.
<b>Install</b>	Device image is installed.
<b>Activate</b>	<ul style="list-style-type: none"> <li>• Sets the boot next variable.</li> <li>• Device is reloaded with the new installed image.</li> <li>• uboot/coreboot install is performed.</li> </ul>
<b>Verify</b>	Post upgrade verifications are performed.

The order of stage execution in the orchestrated upgrade for a specific standalone or cluster node is sequential. That is, after selecting the required standalone nodes and cluster nodes, you must first execute the **Fetch** and **Install** stages. You will be allowed to proceed with the **Activate** and **Verification** stages only on successful completion of these stages. Refer to the [Upgrade Images for Standalone Nodes and Clusters](#) for detailed information about the stages.

---

<sup>1</sup>Limitations include long maintenance windows to upgrade a large number of devices, inability to re-run specific stages of the upgrade process, and image incompatibility failures being identified in the later stages of the upgrade.

**Notes:**

- During the **Activate** and **Verify** stages, the device moves in to the maintenance window and you cannot perform any operation on the device using GigaVUE-FM. It is not recommended to not perform any operation using device CLI.
- The device moves out of the maintenance window only upon successful completion of the orchestrated upgrade.
- To manually move the device out of the maintenance window:
  1. On the left navigation pane, go to  and select **Physical > Nodes**.
  2. Select the required node, and click **Connect Node**.

## Rules, Notes, and Limitations

Refer to the following rules, notes and limitations:


- With orchestrated upgrade, you can upgrade up to 600 nodes at a time. Ensure to accordingly select the number of clusters and standalone nodes so that the total number of nodes does not exceed 600.
- You can also upgrade the nodes using the existing node upgrade process. In case the orchestrated upgrade process fails or if you intentionally want to switch over to the existing upgrade process, you must reset (using the **Reset** button) the orchestrated upgrade process prior to switching over to the existing upgrade process. Refer to the [Upgrade Control Options](#) section for details.
- During the upgrade process, all devices belonging to a cluster will be in the same stage of the upgrade. **For example:** Consider a cluster with 10 devices. Trigger orchestrated upgrade on the cluster by selecting **Fetch** and **Install**. Image fetch will happen on all 10 devices. Image install will happen only if all the members in the cluster complete the image fetch stage. That is, even if some of the members have completed fetching the image (and for some of the members the fetch is in progress) the upgrade stage of all the devices will be displayed as Fetch.
- As upgrade is performed in a staged manner, you cannot combine different devices pending for different stages of upgrade. All devices in a single upgrade schedule must belong to the same stage. **For example:** Consider Cluster 1 with five devices and Cluster 2 with seven devices. Trigger orchestrated upgrade on the clusters. The upgrade stage of the devices is as follows:
  - Cluster 1: All five devices in the cluster are in fetch stage.
  - Cluster 2: All seven devices in the cluster are in fetch and install stage.
  - You cannot resume upgrade by selecting all 12 devices. To resume upgrade:
    - Select all devices in Cluster 1 that have completed fetch, and resume upgrade.
    - Select all devices in Cluster 2 that have completed fetch and install, and resume upgrade.
- In a GigaVUE-FM High Availability group: During the upgrade process, if one of the GigaVUE-FM instance becomes not-reachable or in case of GigaVUE-FM HA failover, the upgrade stage of the devices at the time of failover of GigaVUE-FM instance will be marked as 'Failed'. Retry the upgrade process using the Retry option.

- Step upgrade<sup>1</sup> is not supported in this release. You must perform multiple GigaVUE-OS upgrades on the same device using sequential non-overlapping orchestrated upgrade schedules.
- The GigaSMART image is upgraded in conjunction with the GigaVUE-OS software upgrade. Orchestrated upgrade of standalone GigaSMART image is not supported. Use the legacy upgrade option in the Nodes page to upgrade the GigaSMART image.
- During scheduled upgrade, nodes might become unreachable at the time of execution. Refer to the [Upgrade Cluster with Not-reachable Nodes](#) in the Fabric Management Guide for more details.
- **Important Recommendations**
  - Reset the upgrade process for the cluster if new nodes are added to the cluster during the orchestrated upgrade process.
  - Manually remove the PCAP configuration (for Tx traffic) before initiating the orchestrated upgrade process. Failure to do so will result in Post Upgrade Verification failure due to a mismatch in the operational status of the channel port.

## Upgrade Images for Standalone Nodes and Clusters

To perform orchestrated upgrade of stand alone nodes and clusters, perform the following steps.



1. On the left navigation pane, click , and then select **Physical > Node Upgrade**. The Dashboard Page appears with the list of devices managed in GigaVUE-FM.
2. Select the required devices that you want to upgrade. You can filter the devices as required. You can also filter the devices based on the tags (you cannot sort the devices based on the Tags field).

---

<sup>1</sup>Automated sequential upgrade of devices through multiple GigaVUE-OS software releases.

- Click the drop-down icon in the first column to select the devices. Use one of the options listed below:
  - Select All:** All nodes in a particular page are selected.
  - Unselect All:** All nodes in a particular page are unselected.
  - Select <number of nodes> across <no of pages>:** All nodes across all the pages are selected.

The screenshot shows the 'Node Upgrade' dashboard. At the top, there's a red header with 'Expired Licenses'. Below it, a navigation bar includes 'Node Upgrade', 'Dashboard', and 'Jobs'. A sidebar on the left has a search bar and tags. The main area has an 'OVERVIEW' section with statistics: 1 SUCCESS, 0 FAILED, 1 IN PROGRESS, 5 NOT INITIATED, and 7 TOTAL NODES. To the right, 'DEVICE UPGRADE STAGES' shows progress for FETCH, INSTALL, ACTIVATE, and VERIFY. Below this is a table with columns: CLUSTER ID, TAGS, HOST NAME, NODE ADDRESS, FETCH, INSTALL, ACTIVATE, VERIFY, TASK STATUS, and an action icon. A dropdown menu is open for the first row, showing options: 'Select All', 'Unselect All', and 'Select All 7 Nodes across 2 pages'. The bottom of the dashboard shows 'FM Instance: GigaVUE-FM' and 'Last Updated At: Jun 20, 2023 17:29:19'.

Once you select all nodes across all pages, you cannot deselect individual nodes. Use the **Clear** button to clear the selection.

**NOTE:** If the number of filtered nodes exceeds 600, then this option will be disabled.

- Click **Actions** and select **Upgrade**. The Node Upgrade page appears.

**Node Upgrade** | Dashboard | Jobs

① All form elements are mandatory unless indicated as optional. X

Cancel Apply

**Select Time**

☐ Immediate

☒ Scheduled

Date  at Time

**Stages Selection Options**

**Select Stages**

☒ Fetch

☒ Install

☒ Activate

☒ Backup Config Before Upgrade

☒ Verify

① Activation stage is a Traffic Impacting stage because of activating the new image and perform reload.

**Selected Nodes Section**

**Selected Nodes**

Host Name	Node IP	Role	Model	SW Version	Device Status	Disk Space	Memory
kri-hc3	10.115.86.87	Standalone	HC3	6.3.00_Beta	ok	Available	Available

5. Select or enter the following details:

Table 1: Image Upgrade

Menu	Description
Task Name	The name of the upgrade task.
Task Type	Type of upgrade task. For this release version, only software option is supported.
Image Server Type	<p>The location from where the image can be uploaded. Available options are:</p> <ul style="list-style-type: none"> <li><b>Internal Server</b></li> <li><b>External Server</b></li> </ul>
- Internal Server	<p><b>Internal Server:</b> If you select Internal Server, GigaVUE-FM acts as the internal server. You must have downloaded the images from the Gigamon website and placed them from where they can be available for uploading to GigaVUE-FM. Refer to the "Images" section in the <i>GigaVUE Administration Guide</i> for details.</p> <div> <p><b>NOTE:</b> To obtain software images, register on the <a href="#">Gigamon Customer Portal</a> and download the software. You must provide the serial number for each node you want to update. To view the chassis serial number, login to GigaVUE-OS and select <b>Chassis</b> from the navigation pane. Click <b>List View</b>.</p> <ol style="list-style-type: none"> <li>Choose Internal Server.</li> <li>From the Version drop-down list, select the version to which you want to upgrade.</li> <li>Select the required image file.</li> </ol> <p>If the image file is missing, click <b>Upload image</b> button. In the Upload Internal Images Files quick view,</p> </div>

Menu	Description
	click <b>Choose File</b> and select the image files that you downloaded. Click <b>OK</b>
- External Server	<p><b>External Server:</b> From the drop-down list, select the external image server added to GigaVUE-FM. If the external image server is not available, click <b>Add External Server</b>. In the Add External Server quick view, enter the following:</p> <ol style="list-style-type: none"> <li>In the <b>Alias</b> field, enter the name of the external server.</li> <li>In the <b>Server IP/Hostname</b> field, enter the host IP address or the host name of the server.</li> <li>In the Type drop-down list, select SCP as the file transfer protocol.</li> <li>Enter the username and password of the server in the <b>Username</b> and <b>Password</b> fields respectively.</li> <li>Click <b>Ok</b>.</li> <li>In the text box, enter the image path and the image name.</li> </ol> <p><b>NOTE:</b> For a cluster, the images can reside on different paths. However, the image server should be the same for all the nodes.</p>
Time	<p>The time for performing the upgrade.</p> <p>There are two options:</p> <ul style="list-style-type: none"> <li><b>Immediate</b>—The upgrade is performed immediately.</li> <li><b>Scheduled</b>—The upgrade is performed at a scheduled time. Select the date and time.</li> </ul>
Select Stages	Select the required stage for performing the upgrade.
- Fetch	<p>The image file is downloaded from the selected image server.</p> <ul style="list-style-type: none"> <li>If the image file is placed in the internal server, the image is pushed to the device from the GigaVUE-FM instance.</li> <li>If the image file is placed in the external server, the device pulls the image from the external server.</li> </ul>
- Install	<p>Installs the image file on the device. When you install a new image, it automatically installs on the “next” partition (the one that is not currently being used).</p> <p><b>NOTE:</b> Boot next is not set at this stage. Therefore, any unplanned device reboot that happens outside the context of orchestrated device upgrade after the execution of <b>Install</b> stage and prior to the execution of <b>Activate</b> stage will not load the new image.</p>



Menu	Description
- <b>Activate</b>	<p>The Activate stage involves the following:</p> <ul style="list-style-type: none"> <li>GigaVUE-FM sets the boot next variable.</li> <li>Device is reloaded with the new installed image.</li> <li>The uboot/coreboot install is performed after the device has been reloaded.</li> <li>GigaVUE-FM checks the software version of the device with the image version installed on the device. Device upgrade will succeed only if the device software version is lower than the installed image version.</li> </ul> <div style="border: 1px solid #ccc; padding: 5px; margin-top: 10px;"> <p><b>NOTE:</b> Traffic flow is interrupted in this stage. You cannot perform any operation on the device at this stage.</p> </div> <p>Enable the <b>Backup Config Before Upgrade</b> checkbox to perform a backup of the device configuration before the device is rebooted.</p>
- <b>Verify</b>	<p>Performs upgrade sanity check on the selected devices. This includes the following tasks:</p> <ul style="list-style-type: none"> <li>Physical inventory snapshot of nodes, cards, ports, maps, and GigaSMART operations are captured and the numbers from before and after the upgrade are compared. Sometimes, these numbers do not match immediately after the upgrade, as the device is still being configured.</li> <li>GigaVUE-FM checks every minute whether the nodes have re-joined the cluster. If the nodes fail to rejoin the cluster with in 15 minutes, sanity check will fail.</li> <li>After the nodes join the cluster, GigaVUE-FM again checks every minute for other configuration objects to come up. The config snapshot taken prior to and after the upgrade must match with in 15 minutes. Otherwise, sanity check will fail. When the sanity check fails, GigaVUE-FM provides an ability to view the configuration object that failed the sanity check.</li> </ul>
<b>Selected Nodes section</b>	<p>You can view the list of nodes selected for the upgrade task. This section provides an overview of the nodes/cluster health status, available disk space and memory information.</p>

6. Click **Apply** to start the upgrade.

Device upgrade is initiated. You can view the status of the upgrade from the following pages:

- Dashboard page. Refer to the [View Upgrade Status](#) section for details.
- Jobs page. Refer to the [View Orchestrated Upgrade Tasks](#) section for details.

## Upgrade Control Options

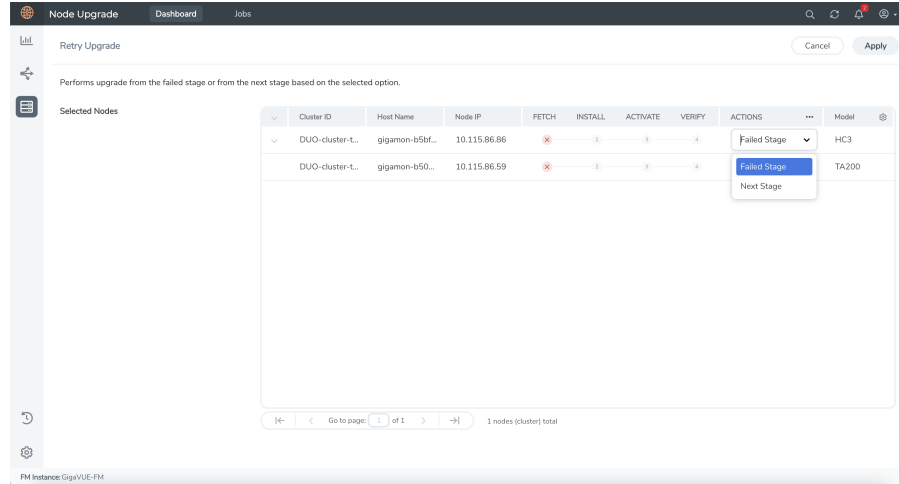
Use the following buttons in the Node Upgrade Dashboard page to perform specific actions:

Button	Description
<b>Show or hide chart</b>	Click to show or hide the <b>Overview</b> stages or <b>Device Upgrade stages</b> chart.
<b>Actions</b>	Select the required nodes and clusters. Click the <b>Actions</b> drop-down to perform the following actions:

**Upgrade:** Use to upgrade the standalone nodes and clusters.

**Resume Upgrade:** Use to resume the upgrade operation after a specific stage is completed.

**Retry:** Use to retry the orchestrated upgrade. You can retry from failed stage or from the next stage.



- **Retry from failed stage:** In case of problems during the upgrade process, rectify the problem and select this option to proceed with upgrade from the current stage. Refer to the following examples:

**Example 1:** The image fetch stage may fail due to insufficient free storage space on the device. You can manually delete unnecessary files on the device such as device sysdumps, and then retry the image fetch stage again.

**Example 2:** The post-upgrade verify stage may fail due to unrelated maintenance work causing some ports to be link status down. You can manually resolve this issue, then retry the post-upgrade verify stage to confirm a successful orchestrated upgrade.

- **Retry from next stage:** If a specific operation cannot be performed from GigaVUE-FM (due to certain reasons), then the user can complete those tasks using device CLI, and select **Retry from Next Stage** in GigaVUE-FM. Refer to the following examples:

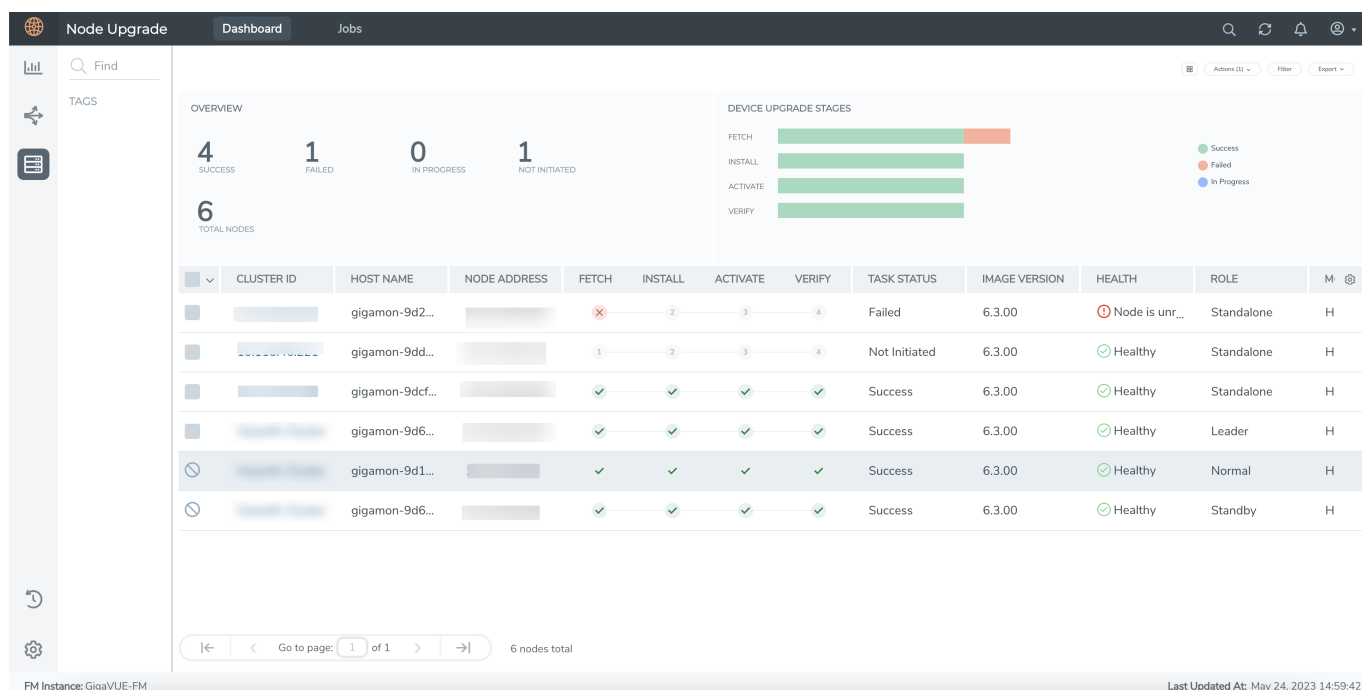
**Example:** The activate stage fails after the device has started rebooting due to an unrelated network issue. This causes the device to be unreachable from GigaVUE-FM and a device timeout is detected. You can either manually resolve the network issue, or wait until it is resolved, and then use Retry from Next Stage to run the verify stage once the network path is restored.

**NOTE:** Ensure to manually resolve the current stage before using the **Retry from Next Stage** option.

	<ul style="list-style-type: none"> <li>• <b>Reset:</b> Removes current upgrade settings in GigaVUE-FM. Clicking the <b>Reset</b> button does not reset or reload the device. The device will also not be rolled back to the previous software version.</li> </ul> <p>Use the <b>Reset</b> button to clear the existing upgrade for the cluster. The Reset button does the following:</p> <ul style="list-style-type: none"> <li>• Clears the stage flags in summary screen</li> <li>• Marks the current on-going upgrade on the cluster as completed.</li> <li>• Releases the maintenance mode, if it is set.</li> <li>• Clears out the alarms raised for upgrade failure, if any.</li> </ul>
<b>Filter</b>	<p>Use to filter the nodes based on the following criteria:</p> <ul style="list-style-type: none"> <li>• Model</li> <li>• Software Version</li> <li>• Task Status</li> <li>• Health Status</li> <li>• Role</li> <li>• Cluster ID</li> <li>• Host Name</li> <li>• Node IP</li> <li>• Serial Number</li> </ul>
<b>Export</b>	Use to export the details of the cluster or nodes in CSV or XLSX format.

## View Upgrade Status

You can view the status of the upgrade from the Dashboard page.



The Dashboard page provides the following details:

- The **Overview** tab displays the metrics on the number of nodes that got upgraded successfully, number of nodes that failed to upgrade, number of nodes that are in the upgrade progress, and the total number of nodes. Click on the number to filter the devices in the table below.
- The **Device Upgrade Stages** tab is a graphical representation of the number of nodes that are in the various upgrade stages. Hover over the horizontal bars to know the status of the upgrade. Click on the bar to filter the nodes based on the criteria.
- Click on a Cluster-id in the Dashboard page. The page split view appears with the Summary and Execution Timeline tabs at the bottom of the page. Click on to view only the details of the Cluster-id, and to hide the charts.
  - Summary:** Displays details of the current upgrade process.
  - Execution Timeline:** Displays details about the past three upgrades on the selected node.

## View Orchestrated Upgrade Tasks

Whenever an upgrade is triggered, a job runs in the background and is captured in the Jobs page. The Jobs page displays the list of the tasks scheduled from the Node Upgrade page and provides details on the status of the tasks.

Parameters	Description
Task Name	Name of the task

Parameters	Description
Task Status	Status of the task
Start Date	Date and time the task was started
End Date	Date and time the task ended
Scheduled Date	Date when the task was scheduled.
Time Left	Date when the task was scheduled.
Created By	Date when the task was scheduled.

The screenshot shows the 'Node Upgrade' interface with a 'Jobs' tab selected. A table lists five tasks with columns: TASK NAME, TASK STATUS, START DATE, END DATE, SCHEDULED DATE, TIME LEFT, and CREATED BY. The tasks include two failures and three successes. Below the table, a detailed view for the task 'Task Name: FailCheck' is shown. This view has two tabs: 'Summary' and 'Execution Details'. The 'Summary' tab is active, displaying a search bar for 'Cluster ID' with results '10.115.46.167' and '10.115.46.221'. A dropdown menu is open, showing 'Show By Success' and 'Show By Failure' options. The 'Execution Details' tab shows the node ID '10.115.46.167', status 'Failed', image 'gvhc2.img', and prior version '6.3.00'. The footer indicates 'FM Instance: GigaVUE-FM' and 'Last Updated At: May 24, 2023 14:59:42'.

Click on a task to view the following details:

- **Summary:** Displays upgrade summary details of the nodes/clusters associated with the selected task. Click the ellipses in the node selector pane and select the **Show by Success** and **Show by Failure** options to further narrow down the nodes based on the upgrade status.
- **Execution Details:** Displays execution state details with time stamp for the standalone nodes/cluster member nodes.

## Jobs Control Options

Use the following buttons in the Jobs page to perform specific actions:

Button	Description
Filter	<p>Use to filter the tasks based on the following criteria:</p> <ul style="list-style-type: none"> <li>• Task Name</li> <li>• Task status</li> <li>• Start Date</li> <li>• End Date</li> </ul> <p>Click the <b>Clear</b> button to clear the filter.</p>
Actions	Select the required tasks in the Jobs page. Click <b>Actions</b> > <b>Delete</b> to delete the tasks.
Export	Use to export all the tasks or selected tasks as a CSV or XLSX file.

## Credentials for Admin Account on New GigaVUE-OS Systems

All GigaVUE HC Series and TA Series devices shipped have the following default login credentials:

- Username: admin
- Password: admin123A!

## Downgrading GigaVUE-OS Nodes

**IMPORTANT:** It is highly recommended to **not** downgrade GigaVUE nodes from higher software versions to lower software versions.

When downgrading a node from 6.0.00 or higher to lesser than 6.0.00 software version, the device can occasionally get in to in a reboot loop. Use the following procedure to exit from the reboot loop:

1. Use the `reset factory all` command on the specific node that is to be downgraded to a lower version.
2. Replace the image in the next partition with the image of the required version to be downloaded. This prevents the script file from wrongly fetching the template file from the next version.



After resetting the node, if the node gets stuck in reboot loop:

- Modify the kernel param by pressing “ESC” key while the node boots up.
- Press “e” to edit kernel param.
- Modify the rw to “ro”.



```
kernel /vmlinuz ro root=/dev/sda5 img_id=1 loglevel=3 panic=10 pci=noaer mem=34668M  
memmap=2176M$1920M console=tty0 console=ttyS0,115200n8 pcie_aspm=off
```

# Additional Sources of Information

This appendix provides additional sources of information. Refer to the following sections for details:

- [Documentation](#)
- [Documentation Feedback](#)
- [Contact Technical Support](#)
- [Contact Sales](#)
- [The VUE Community](#)

## Documentation

This table lists all the guides provided for GigaVUE-OS software and hardware. The first row provides an All-Documents Zip file that contains all the guides in the set for the release.

**NOTE:** In the online documentation, view [What's New](#) to access quick links to topics for each of the new features in this Release; view [Documentation Downloads](#) to download all PDFs.

Table 1: Documentation Set for Gigamon Products

GigaVUE-OS 6.12 Hardware and Software Guides
<p><b>DID YOU KNOW?</b> If you keep all PDFs for a release in common folder, you can easily search across the doc set by opening one of the files in Acrobat and choosing <b>Edit &gt; Advanced Search</b> from the menu. This opens an interface that allows you to select a directory and search across all PDFs in a folder.</p>
<p><b>Hardware</b></p> <p>how to unpack, assemble, rackmount, connect, and initially configure ports the respective GigaVUE-OS devices; reference information and specifications for the respective GigaVUE-OS devices</p>
GigaVUE-HC1 Hardware Installation Guide
GigaVUE-HC3 Hardware Installation Guide
GigaVUE-HC1-Plus Hardware Installation Guide
GigaVUE-HCT Hardware Installation Guide
GigaVUE-TA25 Hardware Installation Guide
GigaVUE-TA25E Hardware Installation Guide
GigaVUE-TA100 Hardware Installation Guide
GigaVUE-TA200 Hardware Installation Guide
GigaVUE-TA200E Hardware Installation Guide
GigaVUE-TA400 Hardware Installation Guide



<b>GigaVUE-OS 6.12 Hardware and Software Guides</b>
<b>GigaVUE-TA400E Hardware Installation Guide</b>
<b>GigaVUE-OS Installation Guide for DELL S4112F-ON</b>
<b>G-TAP A Series 2 Installation Guide</b>
<b>GigaVUE M Series Hardware Installation Guide</b>
<b>GigaVUE-FM Hardware Appliances Guide</b>
<b>Software Installation and Upgrade Guides</b>
<b>GigaVUE-FM Installation, Migration, and Upgrade Guide</b>
<b>GigaVUE-OS Upgrade Guide</b>
<b>GigaVUE V Series Migration Guide</b>
<b>Fabric Management and Administration Guides</b>
<b>GigaVUE Administration Guide</b> covers both GigaVUE-OS and GigaVUE-FM
<b>GigaVUE Fabric Management Guide</b> how to install, deploy, and operate GigaVUE-FM; how to configure GigaSMART operations; covers both GigaVUE-FM and GigaVUE-OS features
<b>GigaVUE Application Intelligence Solutions Guide</b>
<b>Cloud Guides</b> how to configure the GigaVUE Cloud Suite components and set up traffic monitoring sessions for the cloud platforms
<b>GigaVUE V Series Applications Guide</b>
<b>GigaVUE Cloud Suite Deployment Guide - AWS</b>
<b>GigaVUE Cloud Suite Deployment Guide - Azure</b>
<b>GigaVUE Cloud Suite Deployment Guide - OpenStack</b>
<b>GigaVUE Cloud Suite Deployment Guide - Nutanix</b>
<b>GigaVUE Cloud Suite Deployment Guide - VMware (ESXi)</b>
<b>GigaVUE Cloud Suite Deployment Guide - VMware (NSX-T)</b>
<b>GigaVUE Cloud Suite Deployment Guide - Third Party Orchestration</b>
<b>Universal Cloud TAP - Container Deployment Guide</b>
<b>Gigamon Containerized Broker Deployment Guide</b>
<b>GigaVUE Cloud Suite Deployment Guide - AWS Secret Regions</b>
<b>GigaVUE Cloud Suite Deployment Guide - Azure Secret Regions</b>

## GigaVUE-OS 6.12 Hardware and Software Guides

### Reference Guides

#### GigaVUE-OS CLI Reference Guide

library of GigaVUE-OS CLI (Command Line Interface) commands used to configure and operate GigaVUE HC Series and GigaVUE TA Series devices

#### GigaVUE-OS Security Hardening Guide

#### GigaVUE Firewall and Security Guide

#### GigaVUE Licensing Guide

#### GigaVUE-OS Cabling Quick Reference Guide

guidelines for the different types of cables used to connect Gigamon devices

#### GigaVUE-OS Compatibility and Interoperability Matrix

compatibility information and interoperability requirements for Gigamon devices

#### GigaVUE-FM REST API Reference in GigaVUE-FM User's Guide

samples uses of the GigaVUE-FM Application Program Interfaces (APIs)

#### Factory Reset Guidelines for GigaVUE-FM and GigaVUE-OS Devices

Sanitization guidelines for GigaVUE Fabric Management Guide and GigaVUE-OS devices.

### Release Notes

#### GigaVUE-OS, GigaVUE-FM, GigaVUE-VM, G-TAP A Series, and GigaVUE Cloud Suite Release Notes

new features, resolved issues, and known issues in this release ;

important notes regarding installing and upgrading to this release

**Note:** Release Notes are not included in the online documentation.

**Note:** Registered Customers can log in to [My Gigamon](#) to download the Software and Release Notes from the Software and Docs page on to [My Gigamon](#). Refer to [How to Download Software and Release Notes from My Gigamon](#).

### In-Product Help

#### GigaVUE-FM Online Help

how to install, deploy, and operate GigaVUE-FM.

## How to Download Software and Release Notes from My Gigamon

Registered Customers can download software and corresponding Release Notes documents from the **Software & Release Notes** page on to [My Gigamon](#). Use the My Gigamon Software & Docs page to download:

- Gigamon Software installation and upgrade images,
- Release Notes for Gigamon Software, or
- Older versions of PDFs (pre-v5.7).

To download release-specific software, release notes, or older PDFs:

1. Log in to [My Gigamon](#).
2. Click on the **Software & Release Notes** link.
3. Use the **Product** and **Release** filters to find documentation for the current release. For example, select Product: "GigaVUE-FM" and Release: "5.6," enter "pdf" in the search box, and then click **GO** to view all PDF documentation for GigaVUE-FM 5.6.xx.

**NOTE:** My Gigamon is available to registered customers only. Newer documentation PDFs, with the exception of release notes, are all available through the publicly available online documentation.

## Documentation Feedback

We are continuously improving our documentation to make it more accessible while maintaining accuracy and ease of use. Your feedback helps us to improve. To provide feedback and report issues in our documentation, send an email to: [documentationfeedback@gigamon.com](mailto:documentationfeedback@gigamon.com)

Please provide the following information in the email to help us identify and resolve the issue. Copy and paste this form into your email, complete it as able, and send. We will respond as soon as possible.

Documentation Feedback Form		
About You	Your Name	
	Your Role	
	Your Company	
For Online Topics	Online doc link	(URL for where the issue is)
	Topic Heading	(if it's a long topic, please provide the heading of the section where the issue is)
For PDF Topics	Document Title	(shown on the cover page or in page header )
	Product Version	(shown on the cover page)
	Document Version	(shown on the cover page)
	Chapter Heading	(shown in footer)
	PDF page #	(shown in footer)

How can we improve?	Describe the issue	Describe the error or issue in the documentation. (If it helps, attach an image to show the issue.)
	How can we improve the content?  Be as specific as possible.	
	Any other comments?	

## Contact Technical Support

For information about Technical Support: Go to **Settings**  > **Support** > **Contact Support** in GigaVUE-FM.

You can also refer to <https://www.gigamon.com/support-and-services/contact-support> for Technical Support hours and contact information.

Email Technical Support at [support@gigamon.com](mailto:support@gigamon.com).

## Contact Sales

Use the following information to contact Gigamon channel partner or Gigamon sales representatives.

**Telephone:** +1.408.831.4025

**Sales:** [inside.sales@gigamon.com](mailto:inside.sales@gigamon.com)

**Partners:** [www.gigamon.com/partners.html](http://www.gigamon.com/partners.html)

## Premium Support

Email Gigamon at [inside.sales@gigamon.com](mailto:inside.sales@gigamon.com) for information on purchasing 24x7 Premium Support. Premium Support entitles you to round-the-clock phone support with a dedicated Support Engineer every day of the week.

## The VÜE Community

The VÜE Community is a technical site where Gigamon users, partners, security and network professionals and Gigamon employees come together to share knowledge and expertise, ask questions, build their network and learn about best practices for Gigamon products.

Visit the VÜE Community site to:

- Find knowledge base articles and documentation
- Ask and answer questions and learn best practices from other members.
- Join special-interest groups to have focused collaboration around a technology, use-case, vertical market or beta release
- Take online learning lessons and tutorials to broaden your knowledge of Gigamon products.
- Open support tickets (Customers only)
- Download the latest product updates and documentation (Customers only)

The VÜE Community is a great way to get answers fast, learn from experts and collaborate directly with other members around your areas of interest.

**Register today at** [community.gigamon.com](https://community.gigamon.com)

**Questions?** Contact our Community team at [community@gigamon.com](mailto:community@gigamon.com).

# Glossary

## D

---

### decrypt list

need to decrypt (formerly blacklist)

### decryptlist

need to decrypt - CLI Command (formerly blacklist)

### drop list

selective forwarding - drop (formerly blacklist)

## F

---

### forward list

selective forwarding - forward (formerly whitelist)

## L

---

### leader

leader in clustering node relationship (formerly master)

## M

---

### member node

follower in clustering node relationship (formerly slave or non-master)

## N

---

### no-decrypt list

no need to decrypt (formerly whitelist)

## nodecryptlist

no need to decrypt- CLI Command (formerly whitelist)

## P

---

## primary source

root timing; transmits sync info to clocks in its network segment (formerly grandmaster)

## R

---

## receiver

follower in a bidirectional clock relationship (formerly slave)

## S

---

## source

leader in a bidirectional clock relationship (formerly master)